

Perfect for Spring



9 Free Knitting Patterns

9 Free Knitting Patterns Perfect for Spring

Copyright 2011 by Prime Publishing LLC

All rights reserved. No part of this book may be reproduced or transmitted in any form or by any means, electronic or mechanical, including photocopying, recording, or by any information storage or retrieval system, without written permission from the publisher, except in the case of brief quotations embodied in critical articles and reviews.

Trademarks are property of their respective holders. When used, trademarks are for the benefit of the trademark owner only.

Published by Prime Publishing LLC, 3400 Dundee Road, Northbrook, IL 60062 – www.primecp.com



[Free Knitting Projects](#)



[Free Crochet Projects](#)



[Free Sewing Projects](#)



[Free Craft Projects](#)

Letter from the Editors

Happy spring, Fellow Knitters!

If you haven't already, it's time to spice up your wardrobe with some new spring knitting patterns. Knitting isn't just for the colder months, you know - there are plenty of lightweight patterns available that make great accessories for spring.

For fancy outings, take along the feminine Emily's Lace Shawl on p. 5. Paired with a black dress and some heels, this shawl will instantly add color and elegance to your wardrobe. For everyday wear, the Blue Flame Scarf on p. 23 makes an excellent choice. Wrap this lace beauty around your neck and get ready to head out shopping. Don't have anything to carry newly purchased goodies in? Make sure to knit yourself the incredibly chic and thrifty Rainbow Market Bag on p. 19 before you go.

Once you've finished knitting your favorites from *9 Free Knitting Patterns Perfect for Spring*, you'll be ready to take on the new season in style!

For more free knitting patterns, videos and tips, visit www.AllFreeKnitting.com.

Sincerely,

The Editors of AllFreeKnitting

www.AllFreeKnitting.com

Table of Contents

Lovely Spring Fashions 5

Emily's Circular Lace Shawl 5

Stella Luna Lace Shawl 8

Dragon Skin Scarf 10

DIY Anisette Cardi 11

Spring Totes and Bags 15

Felted Floral Bag 15

Leafy Cable Bag 17

Rainbow Market Bag 19

Light and Lacy Scarves 20

Diagonal Baktus Lace Scarf 20

Blue Flame Scarf 23

9 Free Knitting Patterns Perfect for Spring

Abbreviations:

K: Knit

Ktbl: Knit through the back of loop

K2tog: Knit 2 st together

K3tog: Knit 3 st together

Sl-k2tog-pssso: Slip 1 st knitwise to right-hand needle, knit 2 st together, pass the slipped st over

Sl2-k1-p2sso: Slip 2 st knitwise to right-hand needle, knit 1 st, pass the 2 slipped st over

Ssk: Slip 2 st knitwise to right-hand needle, knit the 2 st together

Yo: Yarn over

S: Slip st as if to purl, with yarn in front

Inc rnd:

Yo, k1; rep from—number of sts doubled.

Shawl:

Begin on dpns; change to progressively longer circulars when there are a comfortable number of stitches on the needles. Cast on 9 sts and distribute evenly over 3 dpn. Place marker for beginning of round and join, being careful not to twist sts. Knit 1 rnd.

1st inc rnd: Work inc rnd—18 sts. K 3 rnds.

2nd inc rnd: Work inc rnd—36 sts. K 6 rnds.

3rd inc rnd: Work inc rnd—72 sts. K 12 rnds.

4th inc rnd: Work inc rnd—144 sts. K 5 rnds.

Begin Chart A (Emily's Diamonds):

Rnd 1 Work 12-st rep 12 times. Continue to work Chart A through rnd 15. K 4 rnds.

5th inc rnd: Work inc rnd—288 sts. Knit 3 rnds.

Begin Chart B (Starlight Lace):

 Before beginning, note

instructions for shifting markers in this section.

Rnd 1 Work 6-st rep 48 times. Continue to work Chart B through rnd 16.

Work rnds 1-16 once more, then work rnds 1-9.

Knit 4 rnds. 6th inc rnd: Work inc rnd—576 sts.

K 2 rnds.

Begin Chart C (Elongated Fountain Lace):

Rnd 1 Work 18-st rep 32 times. Continue to work Chart C 9 times, then work rnd 1 once more. K 3 rnds.

Work Edging (see edging instructions).

Chart A (Emily's Diamonds) multiple of 12 sts

Rnd 1: *K3, k2tog, yo, k1, yo, ssk, k4; rep from *

Rnd 2 and all even rnds: Knit

Rnd 3: *K2, k2tog, yo, k3, yo, ssk, k3; rep from *

Rnd 5: *K1, k2tog, yo, k1, yo, sl-k2tog-pssso, yo, k1, yo, ssk, k2; rep from *

Rnd 7: *K1, yo, ssk, k1, ktbl, k1, ktbl, k1, k2tog, yo, k2; rep from *

Rnd 9: *K1, ktbl, yo, ssk, k3, k2tog, yo, ktbl, k2; rep from *

Rnd 11: *K2, ktbl, yo, ssk, k1, k2tog, yo, ktbl, k3; rep from *

Rnd 13: *K3, ktbl, yo, sl-k2tog-pssso, yo, ktbl, k4; rep from *

Rnd 15: *K4, ktbl, k1, ktbl, k5; rep from *

Chart B (Starlight Lace) multiple of 6 sts

Rnd 1: *Ssk, k1, yo, ssk, ktbl, yo; rep from *

Note: When working rnd 1 the 2nd and 3rd times, markers used to set off reps will be shifted 1 st right throughout rnd.

Rnd 2 and all even rnds: Knit

Rnd 3: *K2tog, yo, ktbl, yo, ssk, ktbl; rep from *

Rnd 5: Remove marker, k1, replace marker, *yo, sl2-k1-p2sso, yo, sl-k2tog-pssso; rep from * (St count decreases to 4 st per rep.)

Note: Markers used to set off reps will be shifted 1 st left throughout rnd 5.

Rnd 7: *Ktbl, yo, k1, yo, ktbl, k1; rep from * (St count is restored to 6 st per rep.)

Rnd 8: Knit (as for all even rnds); on last 6-st rep, knit to last st before beginning marker, sl st to right needle, remove marker, sl st back to left needle, replace marker; marker shifted 1 st right.

Rnd 9: *Ssk, ktbl, yo, ssk, k1, yo; rep from *

Note: Markers used to set off reps will be shifted 1 st right throughout rnd.

Rnd 11: *Yo, ssk, ktbl, k2tog, yo, ktbl; rep from *

Rnd 13: Same as rnd 5

Rnd 15: *Yo, ktbl, k1, ktbl, yo, k1; rep from * (St count is restored to 6 st per rep.)

Rnd 16: Same as rnd 8

Chart C (Elongated Fountain Lace) multiple of 18 sts

Rnd 1: *Yo, k3, k2tog, yo, k1, yo, sl-k2tog-pssso, yo, k1, yo, ssk, k3, yo, sl-k2tog-pssso; rep from *

Rnd 2 and all even rnds: Remove beginning marker, k1, replace marker, knit to end of round.

Markers used to set off pattern reps are moved 1 st left throughout rnd.

Rnd 3: *K4, yo, k2tog, yo, k3, yo, ssk, yo, k4, sl-k2tog-pssso; rep from *

Rnd 5: *K3, yo, k2, yo, k2tog, k1, ssk, yo, k2, yo, k3, sl-k2tog-pssso; rep from *

Rnd 7: *K2, yo, k3, yo, k2tog, k1, ssk, yo, k3, yo, k2, slk2tog-pssso; rep from *

9 Free Knitting Patterns Perfect for Spring

Rnd 9: *k1, yo, k4, yo, k2tog, k1, ssk, yo, k4, yo, k1, sl-k2togpsso; rep from *

Rnd 10: Knit.

Edging:

The garter-stitch edging is worked back and forth, clockwise, around the edge of the shawl. RS (odddnumbered) rows are knit from the shawl outward; WS (even-numbered) rows are knit from the outside toward the shawl and the last st is always knit tog with 1 st from the shawl needle. Consequently, there are 2 rows of edging for every 1 shawl st.

Place point protector on left-hand shawl needle. Using right shawl needle, cast on 11 st using scrap yarn and provisional cast on; turn. Work edging set-up row using a spare dpn.

Begin Chart D (Diamond Edging):

Using shawl needle and dpn, work 12-row pattern 95 times, then work rows 1-11 once more (96 reps total). Carefully remove scrap yarn from provisional cast on and place live st on dpn. Graft beginning and ending st.

Edging set-up row: K2, p1, k1, p1, k1, p1, k3, k last st tog with 1 st from shawl needle. Turn.

Chart D (Diamond Edging) stitch count varies

Row 1: K2, k2tog, yo, k2tog, yo, k3, yo, k2. Turn.

Row 2: Slip first st with yarn in front, as if to purl. Move yarn to back. K1, p1, k3, p1, k1, p1, k2, k last st tog with 1 st from shawl needle. Turn.

Row 3: K1, k2tog, yo, k2tog, yo, k5, yo, k2.

Row 4: Slip first st with yarn in front, as if to purl. Move yarn to back. K1, p1, k5, p1, k1, p1, k1, k last st tog with 1 st from shawl needle.

Row 5: K3, yo, k2tog, yo, k2tog, k1, k2tog, yo, k2tog, k1.

Row 6: Slip first st with yarn in front, as if to purl. Move yarn to back. K1, p1, k3, p1, k1, p1, k2, k last st tog with 1 st from shawl needle.

Row 7: K4, yo, k2tog, yo, k3tog, yo, k2tog, k1.

Row 8: Slip first st with yarn in front, as if to purl. Move yarn to back. K1, p1, k1, p1, k1, p1, k3, k last st tog with 1 st from shawl needle.

Row 9: K5, yo, k3tog, yo, k2tog, k1.

Row 10: Slip first st with yarn in front, as if to purl. Move yarn to back. K1, p1, k1, p1, k4, k last st tog with 1 st from shawl needle.

Row 11: k3, k2tog, yo, k2tog, yo, k1, yo, k2.

Row 12: Slip first st with yarn in front, as if to purl. Move yarn to back. K1, p1, k1, p1, k1, p1, k3, k last st tog with 1 st from shawl needle.

Finishing:

Weave in ends and block to desired measurements.

9 Free Knitting Patterns Perfect for Spring

Stella Luna Lace Shawl

By: Natalia for All Knitted Lace

Make a beautiful Stella Luna lace shawl to wear over a fancy dress. These knit shawl patterns are beautiful and stylish.



Materials:

- Lace weight yarn (880 yards/805 m in 100 g) – about 75 g
- Needles – size 6 US (4 mm), 8 US (5 mm)
- Patterns (see below)

Instructions:

The shawl is knitted in tiers: Scheme 1 (bottom tier) is knitted once, Scheme 2 (middle tiers) is knitted 3 times, Scheme 3 (top of the shawl) is knitted once.

Start: cast on 249 stitches on bigger needles. I really recommend using a short-tail method, or simple e-wrap. If you are using a long-tail method you might consider to cast on onto two needles and pull one out after you are done. The goal is to make the bottom row very loose for good stretching during the blocking. Knit the next row.

Bottom tier: continue with smaller needles. Knit the right side of the shawl according to Scheme 1.

After you reach the middle stitch, follow the same scheme FROM LEFT TO RIGHT to knit the left side of the shawl. Middle stitch is knitted once.

Middle tier 1: knit according to Scheme 2. The fragment of scheme in gray (repeat) will be knitted 7 times. As before: once you have reached the middle stitch do the trick of following the scheme from left to right.

Middle tier 2: knit according to Scheme 2. The fragment of scheme in gray (repeat) will be knitted 5 times. As before: once you have reached the middle stitch do the trick of following the scheme from left to right.

Middle tier 3: knit according to Scheme 2. The fragment of scheme in gray (repeat) will be knitted 3 times. As before: once you have reached the middle stitch do the trick of following the scheme from left to right.

Top: knit according to Scheme 3. As before: once you have reached the middle stitch do the trick of following the scheme from left to right.

Finish: you will have 9 stitches on your needle at this point. RS: Knit 3 together, 3 times. WS: Purl 3 together. Pull the yarn through the last stitch. DONE!

Notes: the shawl on the picture was knitted with nups (Estonian lace knitting term); however, if you don't want to bother – they can be omitted and a designated stitch is knitted on a RS and purled on a WS. Or, if you want to make the shawl very fancy, you can add beads in place of nups.

Dragon Skin Scarf

By: Onix Terevinto

This dragon skin scarf from Onix Terevinto is one of the most interesting scarf knitting patterns because it is a multi directional knit scarf pattern. Check out these easy knitting instructions!



Materials:

- Straight or circular needles size 10
- Worsted weight yarn

Note: Dimensions will vary, you can make it as long as you see fit. Multiple of 26 stitches. You can adjust the size of your scarf, just keep adding in sets of 26 stitches to achieve the desired width.

Instructions:

1. Cast on 26 stitches
2. Knit 5 rows in garter stitch at the beg and at the end of the scarf
3. Round 1- (WS) and all odd numbered rounds : Purl
4. **Round 2:** *K1, Yo, SSK, K4, K2tog, K3, Yo, K2, Yo, K3, SSK, K4, K2tog, Yo, K1; rep from *
5. **Round 4:** *K1, Yo, K1, SSK, K2, K2tog, K4, Yo, K2, Yo, K4, SSK, K2, K2tog, K1, Yo, K1; rep from *
6. **Round 6:** * K1, Yo, K2, SSK, K2tog, K5, Yo, K2, Yo, K5, SSK, K2tog, K2, Yo, K1; rep from *
7. **Round 8:** *K1, Yo, K3, SSK, K4, K2tog, Yo, K2, Yo, SSK, K4, K2tog, K3, Yo, K1; rep from *
8. **Round 10:** *K1, Yo, K4, SSK, K2, K2tog, K1, Yo, K2, Yo, K1, SSK, K2, K2tog, K4, Yo, K1; rep from * 5 times
9. **Round 12:** *K1, Yo, K5, SSK, K2tog, K2, (Yo, K2) twice, SSK, K2,tog, K5, Yo, K1; rep from *
10. Rep those 12 rounds for pattern
11. Weave in ends. Steam block or hand wash and lay flat to dry.
12. Enjoy!

DIY Anisette Cardi

By: Debbie Stoller of Stitch Nation

Make this DIY Anisette Cardi with one of the prettiest knitting patterns around. These knitting instructions will make for a nice summer sweater, or something to wear out on the town.



Finished measurements:

Finished Bust: 35 (40, 44, 48, 52)".

Finished Length: 21 (22½, 23½, 24½, 25)".

Directions are for size Small; changes for sizes Medium, Large, XLarge and XXLarge are in parentheses.

Materials:

- "Bamboo Ewe™": 4 (5, 5, 6, 7) balls 5529 Mermaid.
- Knitting Needles: 4mm [US 6] and 4.5mm [US 7].
- Cable needle, stitch markers (4), 5 1¼" diameter buttons (model shown JHB), yarn needle.

Gauge:

19 sts = 4"; 24 rows = 4" in Cable pattern slightly stretched. CHECK YOUR GAUGE. Use any size needles to obtain the gauge given.

Abbreviations:

3/3 LC = Slip next 3 sts to cable needle, hold to front; k3; k3 from cable needle.

M1 (make one stitch) = Lift running thread before next stitch onto left needle and knit into the back loop.

Ssk = Slip next 2 sts knitwise, one at a time to right needle; insert point of left needle into the fronts of these 2 sts and knit them together from this position.

K2, p2 Rib (Multiple of 4 sts)

Row 1 (right side): * K2, p2; repeat from * across.

Repeat Row 1 for K2, p2 rib pattern.

Dec = decrease

k = knit

mm = millimeters;

p = purl

st(s) = stitch(es)

St st = Stockinette st (k on right side rows, p on wrong side rows)

tbl = through back loop; tog = together; yo = yarn over; * or ** = repeat whatever follows the * or ** as indicated.

Notes: "Bamboo Ewe™" Art. T101 available in 3.5 oz (100 g); 177 yd (162 m) balls.(Size 4 Medium)

Instructions:

Cardigan

Back

With larger needles, cast on 84 (96, 104, 116, 124) sts. Work in K2, p2 rib for 4", end by working a wrong side row and dec 0 (2, 0, 2, 0) sts evenly across last row—84 (94, 104, 114, 124) sts.

Setup Patterns

Next Row: K1, m1, k9 (14, 19, 24, 29), p1, place marker, work Row 1 of Chart 1 over next 11 sts, place marker, work Row 1 of Chart 2 over next 39 sts, place marker, work Row 1 of Chart 1 over next 11 sts, place marker, p1, k11 (16, 21, 26, 31)—85 (95, 105, 115, 125) sts.

Next Row: P11 (16, 21, 26, 31), k1, work Row 2 from charts as established between markers, k1, p11 (16, 21, 26, 31).

Work in patterns as established until piece measures 13 (14, 14½, 15, 15)" from beginning, end by working a wrong side row.

Shape Raglan

Bind off 6 (10, 10, 10, 10) sts at beginning of next 2 rows—73 (75, 85, 95, 105) sts.

For Sizes S (M, L, XL) only

9 Free Knitting Patterns Perfect for Spring

Next Row (dec) (right side): K2, ssk, work in patterns as established across row to last 4 sts, k2tog, k2. Repeat dec row every right side row 14 (15, 21, 25) times more, then every other right side row 4 (4, 1, 0) times. Bind off remaining 35 (35, 39, 43) sts.

For Size XXL only

Next Row (dec) (right side): K2, ssk, work in patterns as established across row to last 4 sts, k2tog, k2.

Next Row (dec) (wrong side): P2, p2tog, work across row to last 4 sts, p2tog-tbl, p2. Repeat last 2 dec rows 8 times more, then work like dec row every third row 12 times. Bind off remaining 45 sts.

Right Front

With larger needles, cast on 44 (48, 52, 60, 64) sts. Work in K2, p2 rib for 4", end by working a wrong side row and dec 0 (0, 0, 2, 0) sts evenly across last row—44 (48, 52, 58, 64) sts.

Setup Patterns

Next Row: K2, p1, place marker, work Row 1 of Chart 2 over next 18 sts, place marker, work Row 1 of Chart 1 over next 11 sts, place marker, p1, k11 (15, 19, 25, 31).

Next Row: P11 (15, 19, 25, 31), k1, work Row 2 from charts as established between markers, k1, p2. Work in patterns as established until piece measures 13 (14, 14½, 15, 15)" from beginning, end by working a right side row.

Shape Raglan and Neck

(Read thru instructions once before beginning)
Bind off 6 (10, 10, 10, 10) sts at beginning of row for armhole edge, work to end—38 (38, 42, 48, 54) sts.

For Sizes S (M,L,XL) only

Next Row (dec) (right side): Work across row in pattern to last 4 sts, k2tog, k2. Repeat dec row every right side row 16 (17, 19, 21) times more.

For Size XXL only

Next Row (dec) (right side): Work across row in pattern to last 4 sts, k2tog, k2.

Next Row (dec) (wrong side): P2, p2tog, work to end of row. Repeat last 2 dec rows 8 times more, then work like dec row every third row 9 times.

For All Sizes

AND AT THE SAME TIME when piece measures 17 (18½, 19½, 20, 20)" from beginning, end wrong side row shape neck as follows: bind off 6 (6, 7, 8, 8) sts at beginning of next row for neck edge, continue to bind off at same edge 4 (4, 4, 6, 6) sts, then 3 (3, 3, 4, 4) sts. Work 1 row even.

Next Row (dec) (right side): K1, ssk, work to end of row. Repeat dec row every right side row 4 (3, 4, 4, 5) times more—3 sts. P3tog. Fasten off.

Left Front

Cast on and work same as for Right Front to Setup Patterns.

Setup Patterns

Next Row: K11 (15, 19, 25, 31), p1, place marker, work Row 1 of Chart 1 over next 11 sts, place marker, work Row 1 of Chart 2 over next 18 sts, place marker, p1, k2.

Next Row: P2, k1, work Row 2 from charts as established between markers, p11 (15, 19, 25, 31) sts.

Work in patterns as established until piece measures 13 (14, 14½, 15, 15)" from beginning, end by working a wrong side row.

Shape Raglan and Neck

(Read thru instructions once before beginning)
Bind off 6 (10, 10, 10, 10) sts at beginning of row for armhole edge, work to end—38 (38, 42, 48, 54) sts.

Next Row: Work even across.

For Sizes S (M, L, XL) only

Next Row (dec) (right side): K2, ssk, work to end of row. Repeat dec row every right side row 16 (17, 19, 21) times more.

For Size XXL only

Next Row (dec) (right side): K2, ssk, work to end of row.

Next Row (dec) (wrong side): Work across row to last 4 sts, p2tog-tbl, p1. Repeat last 2 dec rows 8 times more, then work like dec row every third row 9 times.

For All Sizes

AND AT THE SAME TIME when piece measures 17 (18½, 19½, 20, 20)" from beginning, end right side row shape neck as follows: bind off 6 (6, 7, 8, 8) sts

9 Free Knitting Patterns Perfect for Spring

at beginning of next row for neck edge, continue to bind off at same edge 4 (4, 4, 6, 6) sts, then 3 (3, 3, 4, 4) sts.

Next Row (dec) (right side): Work across row to last 3 sts, k2tog, k1. Repeat dec row every right side row 4 (3, 4, 4, 5) times more—3 sts. P3tog. Fasten off.

Right Sleeve

With larger needles, cast on 64 (72, 72, 84, 84) sts. Work in K2, p2 rib or 1", end by working a wrong side row and dec 0 (0, 0, 1, 1) st across last row—64 (72, 72, 83, 83) sts.

Setup Pattern

K7 (11, 11, 11, 11) sts, place marker, work Row 1 of Chart 3 over next 50 (50, 50, 61, 61) sts, place marker, k7 (11, 11, 11, 11) sts.

Working first and last 7 (11, 11, 11, 11) sts in St st, and sts between markers in pattern as established, work 1 row even.

Shape Raglan

Bind off 6 (10, 10, 10, 10) sts at beginning of next 2 rows—52 (52, 52, 63, 63) sts.

Next Row (dec) (right side): K2, ssk, work in pattern as established across row to last 4 sts, k2tog, k2. Repeat dec row every right side row 15 (11, 10, 18, 17) times more, then every other right side row 3 (7, 8, 5, 6) times AND AT THE SAME TIME when piece measures 7 (7½, 8, 8½, 9)" from beginning, end by working a wrong side row, shape top of sleeve by bind off 4 sts at beginning of next row, then bind off 3 sts at same edge, then 2 sts at same edge, then dec 1 st at same edge every right side row until 3 sts remain. Bind off.

Left Sleeve

Cast on and work same as for Right Sleeve to Shape Raglan.

Shape Raglan

Bind off 6 (10, 10, 10, 10) sts at beginning of next 2 rows—52 (52, 52, 63, 63) sts.

Next Row (dec) (right side): K2, ssk, work in patterns as established across row to last 4 sts, k2tog, k2. Repeat dec row every right side row 15 (11, 10, 18, 17) times more, then every other right side row 3 (7, 8, 5, 6) times AND AT THE SAME TIME when piece measures 7 (7½, 8, 8½, 9)" from beginning, end by working a right side side row, shape top of sleeve by bind off 4 sts at beginning of

next row, then bind off 3 sts at same edge, then 2 sts at same edge, then dec 1 st at same edge every wrong side row until 3 sts remain. Bind off.

Finishing

Sew raglan seams. Sew sleeve and side seams.

Neck Band

With right side facing and smaller needle, pick up and k6 (6, 7, 8, 8) bound off sts from right front neck edge, 7 (7, 7, 10, 10) bound off sts from side neck edge, 10 (10, 10, 10, 12) sts up side neck edge, 16 (16, 16, 16, 20) sts across sleeve, 34 (34, 36, 40, 42) sts across back, 16 (16, 16, 16, 20) sts across sleeve, 10 (10, 10, 10, 12) sts from side neck, 7 (7, 7, 10, 10) bound off sts from side neck bind off, 6 (6, 7, 8, 8) bound off sts from left front neck edge—112 (112, 116, 128, 142) sts. Work in K2 p2 rib for 1". Bind off in rib.

Button Band

With right side facing and smaller needle, pick up and k84 (88, 96, 100, 100) sts evenly along left front edge. Work in K2, p2 rib for 1". Bind off in rib. Place markers for 5 buttons evenly spaced.


Buttonhole Band

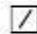
Work same as for button band along right front edge, until band measures ½"

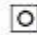
Next Row: Make buttonholes opposite markers by binding off 2 sts. On following row, cast on 2 sts over bound off sts. Work until band measures 1". Bind off loosely. Sew buttons in place. Weave in yarn ends.

STITCH KEY

 K on right side, p on wrong side

 P on right side, k on wrong side

 K2tog

 Yarn over (yo)

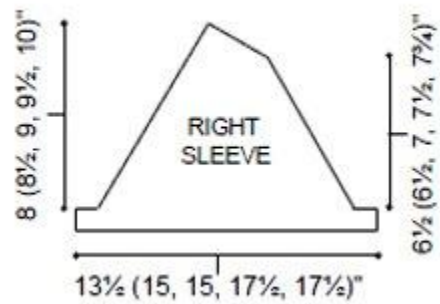
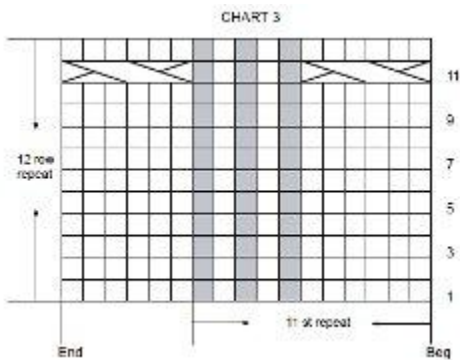
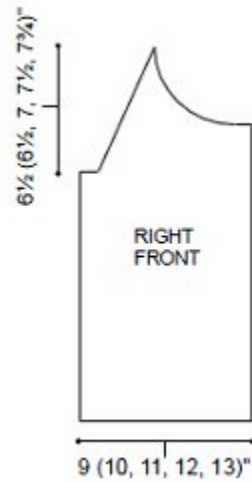
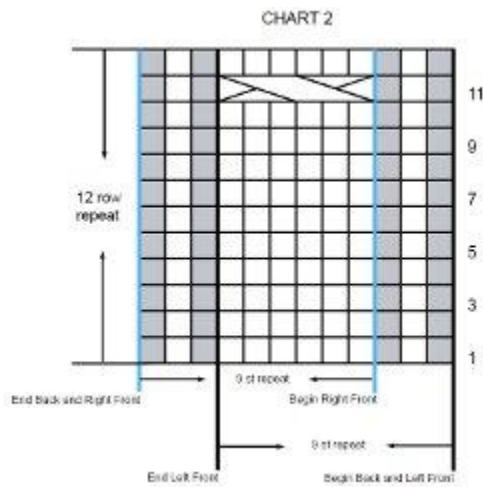
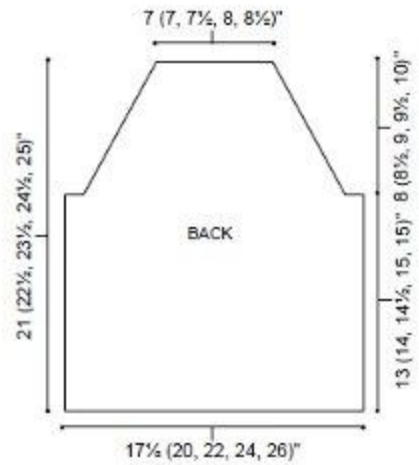
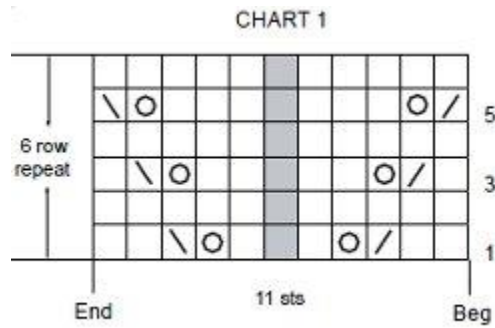
 Ssk



3/3 RC = Slip next 3 sts to cable needle, hold to front, k3, k3 from cable needle

9 Free Knitting Patterns Perfect for Spring

Charts:



Spring Totes and Bags

Felted Floral Bag

By: Patons

Knit a versatile wool bag with bright floral accents. This pattern is for the beginning knitter and fun for everyone.



Materials:

- Patons® Classic Wool: (100 g/3.5 oz; 205 m/223 yds), Main Color (MC) (77044 Mercury) 2 balls, Contrast A (77307 Wisteria) 1 ball, Contrast B (77531 Currant) 1 ball, Contrast C (77435 Water Chestnut) 1 ball, Contrast D (00212 Royal Purple) 1 ball, Contrast E (77223 Lemongrass) 1 ball, Contrast F (00240 Leaf) 1 ball
- Circular Knitting Needles: size 5 mm (U.S. 8) 16 ins [40 cm] long.
- Doublepointed Needles: set of four size 5 mm (U.S. 8) or size needed to obtain tension.
- Toggle.
- Piece of cardboard 2 x 4 ins [5 x 10 cm].
- Fabric marking pencil.

Measurements:

Approx 12 ins [30.5 cm] wide x 10½ ins [26.5 cm] high excluding handles (after felting).

Tension:

19 sts and 25 rows = 4 ins [10 cm] in stocking st.

Instructions:

Beg at center of Base, with MC and set of 4 needles, cast on 8 sts (2, 2, 3 sts). Join in rnd placing a marker on first st.

1st and alt rnds: Knit.

2nd rnd: *Inc 1 st in next. Rep from * around. 16 sts.

4th rnd: *Inc 1 st in next st. K1. Rep from *around. 24 sts.

6th rnd: *Inc 1 st in next st. K2. Rep from * around. 32 sts.

8th rnd: *Inc 1 st in next st. K3. Rep from * around. 40 sts. Cont in this manner, inc 8 sts evenly around following alt rnds until there are 112 sts, changing to circular needle to accommodate inc sts when necessary. Place marker at end of last rnd.

Cont even knitting in rnds until work from marker measures 8 ins [20.5 cm].

Next rnd: *K12. K2tog. Rep from * around. 104 sts.

Next rnd: Purl.

Next rnd: Knit.

Rep last 2 rnds 3 times more. Cast off.

Important to know before felting

Record all the measurements and changes before and after felting. You will be able to adjust the method to produce proper results.

Always test a sample. Different colored yarns may felt differently.

Colorfastness can be affected by very hot water.

Any knitting that has been properly felted becomes very dense and matted.

9 Free Knitting Patterns Perfect for Spring

How to Felt

1. Using low water level, run a Hot/Cold cycle for 5 to 15 min. Add a pair of old jeans for agitation.
2. Add 2 tablespoons of baking soda for a small load. After one cycle, check for size. Repeat if necessary.
3. Run through the rinse and dry spin cycle.
4. Do not use a clothes dryer.
5. Shape piece to correct measurements.
6. Lay felted piece on a dry towel, away from direct heat or sunlight.
7. If an edge ripples, baste a thread through the edge and gather in.
8. Remove the thread after the felting is dry.

Handles (make 2).

With MC and set of 4 needles, cast on 10 sts (3, 3, 4 sts). Join in rnd placing a marker on first st. Knit in rnds until work from beg measures 21 ins [53.5 cm]. Cast off.

Button Loop

With 2 strands of MC, cast on 32 sts. Cast off loosely.

Plain Posy (make 1 each with A, B, C and D). Cast on 48 sts.

Beg with a knit row, work 6 rows stocking st.

Next row: (RS). *K8. Rotate left-hand needle clockwise 360 degrees (see photo). Rep from * across ending with K8 – 6 ‘petals’ made.

Next row: Purl.

Next row: *K2tog. Rep from * to end of row. 24 sts rem.

Next row: *P2tog. Rep from * to end of row. 12 sts rem.

Next row: *K2tog. Rep from * to end of row. 6 sts rem. Break yarn leaving a long end. Draw end tightly through rem sts.

2 Color Posy (make 2 each with D or A as Color 1 and A or D as Color 2) (make 1 each with B or C as Color 1 and C or B as Color 2). With Color 1, cast on 48 sts.

Beg with a knit row, work 6 rows stocking st.

Next row: (RS). *K8. Rotate left-hand needle clockwise 360 degrees (see photo). Rep from * across ending with K8. Break Color 1.

Next row: With Color 2, Purl.

Next row: *K2tog. Rep from * to end of row. 24 sts rem.

Next row: *P2tog. Rep from * to end of row. 12 sts rem.

Next row: *K2tog. Rep from * to end of row. 6 sts rem. Break yarn leaving a long end. Draw end tightly through rem sts.

Leaf Pieces (make 1 each with E and F).

Cast on 48 sts. Work 10 ins [25.5 cm] in stocking st ending with a purl row. Cast off.

Finishing:

Felt all pieces.

Note: Felted posies should coil naturally into correct shape without sewing. After felting, coil into correct shape before laying flat to dry.

Sew on Handles having ends 1 inch [2.5 cm] inside top edge. Fold toggle loop in half and attach to top edge of Bag at center back. Sew sides of loop tog approx 1¼ ins [3 cm] from fold. Sew toggle to front to correspond to loop.

Trace leaf template onto cardboard and cut out cardboard. Using cardboard and marking pencil, trace 10 leaves onto each Leaf Piece. Cut out shapes. Attach 2 leaves (1 of each color) to center back of each posy. Arrange 10 posies around top edge of bag as shown and sew in position.

Leafy Cable Bag

By: Patons

This spacious knit sack is great for your everyday book bag or shopping tote. The leafy cable detail makes it an intermediate knitting pattern.



Materials:

- Patons® SWS (80 g/2.8 oz)
8 balls: #70242 (Natural Moss)
- Knitting Needles: size 5.5 mm (U.S. 9)
or size needed to obtain tension.
- Cable needle – CN.

Measurements:

Approx 15 x 14 ins [38 x 35.5 cm] after felting, excluding strap.

Tension:

17 sts and 21 rows = 4 ins [10 cm] in stocking st.

Stitch Glossary:

C10B = Slip next 5 stitches onto a CN and leave at back of work. K5, then K5 from CN.

C10F = Slip next 5 stitches onto a CN and leave at front of work. K5, then K5 from CN.

Important to Know Before Felting

1. Record all the measurements and changes before and after felting. You will be able to adjust the method to produce proper results.
2. Always test a sample. Different colored yarns may felt differently.
3. Colorfastness can be affected by very hot water.
4. Any knitting that has been properly felted becomes very dense and matted.

Felting:

1. Put knitted pieces in top-loading washing machine. Using low water level, run a Hot/Cold cycle for 5-15 min. Put in a pair of jeans or large towel (in non-interfering color) for extra agitation.
2. Add 2 tablespoons of baking soda for a small load. After one cycle, check for size. Repeat as necessary.
3. Run through the rinse and spin cycle.
4. Lay felted piece on a dry towel, away from heat or sunlight.
5. Shape piece to correct measurements.
6. Allow to dry thoroughly. Do not use a clothes dryer.
7. If an edge ripples, baste a thread through the edge and gather in. Remove the thread after the felting is dry.

Instructions:

Panel Pat A (worked over 16 sts). 1st, 3rd, 5th, 7th and 9th rows: (RS). P2. K10. P4.

2nd and alt rows: K4. P10. K2.

11th row: P2. C10B. P4.

12th row: As 2nd row.

These 12 rows form Panel Pat A.

Panel Pat B (worked over 16 sts).

1st, 3rd, 5th, 7th and 9th rows: (RS). P4. K10. P2.

2nd and alt rows: K2. P10. K4.

9 Free Knitting Patterns Perfect for Spring

11th row: P4. C10F. P2.

12th row: As 2nd row.

These 12 rows form Panel Pat B.

FRONT and BACK (make alike).

Cast on 100 sts.

1st row: (RS). (Work 1st row of Panel Pat A. K18.
Work 1st row of Panel Pat B) twice.

2nd row: (Work 2nd row of Panel Pat B. P18. Work
2nd row of Panel Pat A) twice. Panel Pats A and B
are now in position. Cont in Pat until work from
beg measures 20 ins [51 cm], ending with a WS
row.

Strap: Cast off 32 sts beg next 2 rows. 36 sts.

9 Free Knitting Patterns Perfect for Spring

Rainbow Market Bag

By: Lily Sugar 'n Cream

This bag is small enough to keep tucked away when you're not using it, but large enough to expand and fit all your groceries. This free knitting pattern is easy to make and totally practical for everyday use.



Materials:

- Lily® Sugar'n Cream® (Ombres 340 g/12 oz) 1 ball
- Knitting Needles: sizes 4 mm (U.S. 6) and 10 mm (U.S. 15) or size needed to obtain gauge.

Measurement:

Approx 15 ins [38 cm] long, excluding handles.

Gauge:

21 sts and 27 rows = 4 ins [10 cm] with smaller needles in stocking st.

Instructions:

Body: With smaller needles, cast on 24 sts.
Knit 5 rows, noting 1st row is WS.

6th row: (RS). *(K1. P1. K1) in next st. Rep from * to end of row. 72 sts.

Change to larger needles and proceed as follows:

1st row: (WS). Sl1. Purl to end of row.

2nd row: Sl1. *K2tog. Do not slip sts off needle. K2togtbl into the same sts. Slip 2 sts off needle – Cluster 2tog made. Rep from * to last st. K1.

3rd row: Sl1. Purl to end of row.

4th row: Sl1. K1. * Cluster 2tog. Rep from * to last 2 sts. K2.

5th row: As 3rd row.

Rep 2nd to 5th rows until work from beg measures 18 ins [45.5 cm], ending with a WS row.

Change to smaller needles and proceed as follows:

Next row: (RS). (K3tog) 24 times. 24 sts.

Knit 5 rows. Cast off.

Handles:

With RS of work facing and smaller needles, pick up and knit 30 sts along side of bag. Cast on 80 sts. 110 sts in total.

Knit 6 rows. Cast off knitwise (WS).

Rep for other side. Sew sides of each handle.

Light and Lacy Scarves

Diagonal Baktus Lace Scarf

By: Natalia for All Knitted Lace

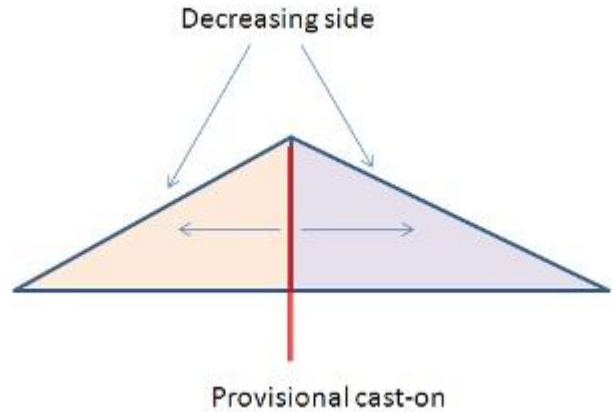
Want to learn how to knit a scarf? Beginner patterns like the diagonal baktus lace scarf are perfect! Add some femininity to your wardrobe with this light and lacy scarf.



Materials:

- Yarn: TLC® Wiggles™, 100% Acrylic 3.5 oz (100 g) Approx. 250 yd (230 m), color: Peach
- Needles: US 8 (6 mm)
- Chart
OR
- Yarn and needles of your choice!

The knitting starts with a provisional cast-on at the widest point of the triangular scarf and one half of the scarf is knitted. Then the stitches from the provisional cast-on are placed on the needle and the other half of the scarf is knitted in the other direction.



Size:

64 inch x 11 inch (widest point)
165 cm x 28 cm

Instructions:

1. With a piece of waste yarn crochet a chain of 40 stitches.
2. With your needles and yarn pick 37 stitches from the "bumps" on the back of crocheted chain. Set up the lacy pattern according to the 1st row on the scheme as follows: stitches 1 and 2 – once, stitches 3 through 10 – 4 times, stitches 11-13 – once.
3. To continue, follow rows 3-18 of the scheme. Please note that the even rows are not shown, but it is easy to "feel" them: if the stitch was knitted on the right side – it will be purled on wrong side. YOs are purled.
4. Decreasing will naturally happen on the left side of your knitting - just remember that after row 18, you will repeat stitches of the decrease (shown in gray, rows 7-18).
5. As you progress you will see that the number of pattern repeats will decrease.
6. Knit following the scheme until you have 10 stitches left, cast them off using any method you prefer.
7. Alternatively, you can knit all way to the point when you have only 2 stitches left -

9 Free Knitting Patterns Perfect for Spring

you will have a pointy end.

8. Remove the crocheted waste yarn picking up stitches on your needle. Make sure that the first row is to be knitted on the right side. Follow the set up row 1 on the scheme B: 1-3 are knitted once, 4-10 – 4 times, 11-12 are knitted once. You are set now to knit the second part of the shawl.



Pattern in words:

The first half of the scarf:

1. With a piece of waste yarn crochet a chain of 40 stitches.
2. With your needles and yarn pick 37 stitches from the “bumps” on the back of crocheted chain.
3. Setup row: sl 1, k2, *yo, p2tog, p2, yo, k2togtbl, k2* (repeat from *to* 4 times), k2
4. 2nd row: in every even row if the stitch was knitted in odd rows it will be purled, if it was purled it will be knitted, yo – purled. Proceed in this manner until you have 2 stitches left, then: k1, p1
5. 3rd row: sl 1, k1, *8 stitches of pattern 1* (repeat as many times as needed), k3
6. 5th row: sl 1, k1, *8 stitches of pattern 1*, k2togtbl, k2
7. 7th row: sl 1, k1, *8 stitches of pattern 1*, yo, k3tog
8. 9th row: sl 1, k1, *8 stitches of pattern 1*, p2

9. 11th row: sl 1, k1, *8 stitches of pattern 1*, p2
10. 13th row: sl 1, k1, *8 stitches of pattern 1*, p3tog
11. 15th row: sl 1, k1, *8 stitches of pattern 1*, k1
12. 17th row: sl 1, k1, *8 stitches of pattern 1*, k1
13. 19th row: sl 1, k1, *8 stitches of pattern 1, row 3*, repeat from row 7
14. 21st row: sl 1, k1, *8 stitches of pattern 3, row 5*, repeat from row 9 etc,
15. You will proceed in this manner repeating rows 3-17 of the main pattern and at the same time at the end of each row repeat stitches in bold from rows 7-17 which will ensure a slow decrease of the scarf width.

Pattern 1:

1. Cast on number of stitches divisible by 8
2. Patten is knitted in stockinet: in even rows if the stitch was knitted in odd rows it will be purled, if it was purled it will be knitted, yo – purled.
3. 3rd row: *k2, yo, p2tog, p2, yo, k2togtbl*
4. 5th row: *k3, yo, p2tog, p2, yo*
5. 7th row: *yo, k2togtbl, k2, yo, p2tog, p1*
6. 9th row: *p1, yo, k2togtbl, k2, yo, p2tog, p1*
7. 11th row: *p2, yo, k2togtbl, k2, yo, p2tog*
8. 13th row: *p3, yo, k2togtbl, k2, yo*
9. 15th row: *yo, p2tog, p2, yo, k2togtbl, k2*
10. 17th row: *k1, yo, p2tog, p2, yo, k2togtbl, k1*
11. 19th row: repeat 1st row

9 Free Knitting Patterns Perfect for Spring

The second part of scarf:

1. Place the stitches from the provisional cast on onto your needle; make sure that the first row to be knitted is on the right side.
2. Setup row: k3,*k1, k2tog , yo, p2, p2togtbl, yo, k1* (repeat from *to* 4 times), k1, p1
3. 2nd row: s1, k1, then in every even row if the stitch was knitted in odd rows it will be purled, if it was purled it will be knitted, yo – purled.
4. 3rd row: k3,*8 stitches of pattern 2* (repeat as many times as needed), k1, p1
5. 5th row: k2, k2tog, *8 stitches of pattern 2*, k1, p1
6. 7th row: k3tog, yo, *8 stitches of pattern 2*, k1, p1
7. 9th row: p2,*8 stitches of pattern 2*, k1, p1
8. 11th row: p2, *8 stitches of pattern 2*, k1, p1
9. 13th row: p3tog,*8 stitches of pattern 2*, k1, p1
10. 15th row: k1, *8 stitches of pattern 2*, k1, p1
11. 17th row: k1, *8 stitches of pattern 2*, k1, p1
12. 19th row: repeat from row 7, *8 stitches of pattern 2, row 3*, k1, p1
13. You will proceed in this manner repeating rows 3-17 of the main pattern and at the same time at the beginning of each row repeat stitches in bold from rows 7-17 which will ensure a slow decrease of the scarf width.

Pattern 2:

1. cast on number of stitches divisible by 8
2. 3rd row: *k2tog, yo, p2, p2togtbl, yo, k2*
3. 5th row: *yo, p2, p2togtbl, yo, k3*
4. 7th row: *p2, p2togtbl, yo, k2, k2tog, yo*
5. 9th row: *p1, p2togtbl, yo, k2, k2tog, yo, p1*
6. 11th row: *p2togtbl, yo, k2, k2tog, yo, p2*
7. 13th row: *yo, k2, k2tog, yo, p3*
8. 15th row: k2, k2tog, yo, p2, p2togtbl, yo*
9. 17th row: k1, k2tog, yo, p2, p2togtbl, yo, k1*
10. 19th row: repeat from 3rd row

9 Free Knitting Patterns Perfect for Spring

Blue Flame Scarf

By: Faith Schmidt for Authentic Knitting Board

Spring is in the air. While the days are getting warmer, the mornings and evenings still carry a chill. This scarf is the perfect answer. It provides just enough weight for those chilly evenings, but is light enough for the warming days of spring. It would make a lovely accessory knitted in springtime pastels.



Materials:

- Knitting Loom: Small gauge double sided knitting board with at least 21 pegs set at 1/4" spacer setting. The 10" Authentic Knitting Board was used in the sample.
- Yarn: 220 yards of sport weight yarn. Red Heart Soft Baby was used in the sample.
- Tapestry Needle
- Knitting tool
- Crochet hook
- Stitch markers (2)

Gauge:

14 stitches and 14 rows on a 4"x 4" swatch in stockinette stitch

Abbreviations: Cast on—CO, Bind off—BO, Knit with stockinette stitch—K

Pattern Notes:

Making the chevron pattern is very simple. It consists of shifting loops to different needles, wrapping the board, and then picking over. Follow the steps below carefully, and you will be on your

way to making chevrons. Once you have gone through the steps once, and see what you are doing, you will find this very easy.

Chevron Lace Pattern:

1. The first peg on the left is #1. Move loop #2 to peg #1. Move loop #3 to Peg #2. Move loop #4 to peg #3. Move loop #5 to peg #4. Peg #5 will be empty. Peg #1 will have two loops.
2. Move loop #10 to peg #11 (It is marked with the stitch marker). Move loop #9 to peg #10. Move loop #8 to peg #9. Move loop #7 to peg #8. Peg #7 will be empty. Peg #11 will have two loops.
3. Move loop #12 to peg #11 (It is marked with the stitch marker). Move loop #13 to peg #12. Move loop #14 to peg #13. Move loop #15 to peg #14. Peg #15 will be empty. Peg #11 will now have three loops.
4. Move loop #20 to peg #21. Move loop #19 to peg #20. Move loop #18 to peg #19. Move loop #17 to peg #18. Peg #17 will be empty. Peg #21 will have two loops.
5. Turn the board around and repeat steps 1-4. Each side should look exactly alike.
6. Wrap the board as usual. Lift all the bottom loops over the top loop so that only one loop remains on each peg. Do not pick over the pegs that have only one loop on them. This picture shows a close-up view of what the chevron lace pattern will look like when knitted.

Size: Finished size is 6" x 45"

Instructions:

1. Place a stitch marker on peg #11 (counting from peg #1 on the left).
2. CO on 21 pegs with the stockinette cast on.
3. Row 1 K
4. Row 2 K
5. Row 3 Follow Chevron Lace Pattern
6. Row 4 K
7. Row 5 K
8. Repeat rows 3-5 until scarf measures 45 inches or desired length, ending with row 5.
9. BO both ends. Weave in any loose ends. Add fringe if desired.

9 Free Knitting Patterns Perfect for Spring

9 Free Knitting Patterns Perfect for Spring



Included in this eBook:

- Emily's Lace Shawl
- Blue Flame Scarf
- Rainbow Market Bag
- Dragon Skin Scarf
- Stela Luna Lace Shawl

Sign up for our [free knitting newsletter](#) and receive more low-cost collections, free knitting projects, knitting tips, knitting tutorials and more right in your inbox every week.